

KH Hub Identification

BPW have five KH Hub generations of BPW ECO and ECO Plus axles.

1. The first BPW ECO axle was a 10 ton axle. (from 1996)
2. After which followed the BPW MAXX axle, also a 10 ton axle. (from 1998)
3. A few years later followed the BPW ECO Plus; 9 ton axle (2002)
4. Thereafter it was the BPW ECO Plus 2; 9 ton axle (2008)
5. The latest generation is the BPW ECO Plus; 10 ton axle (2011)

The BPW ECO Plus 10 ton axle was introduced due to the market demand for a more robust, 10 ton axle to run on dual wheel applications.

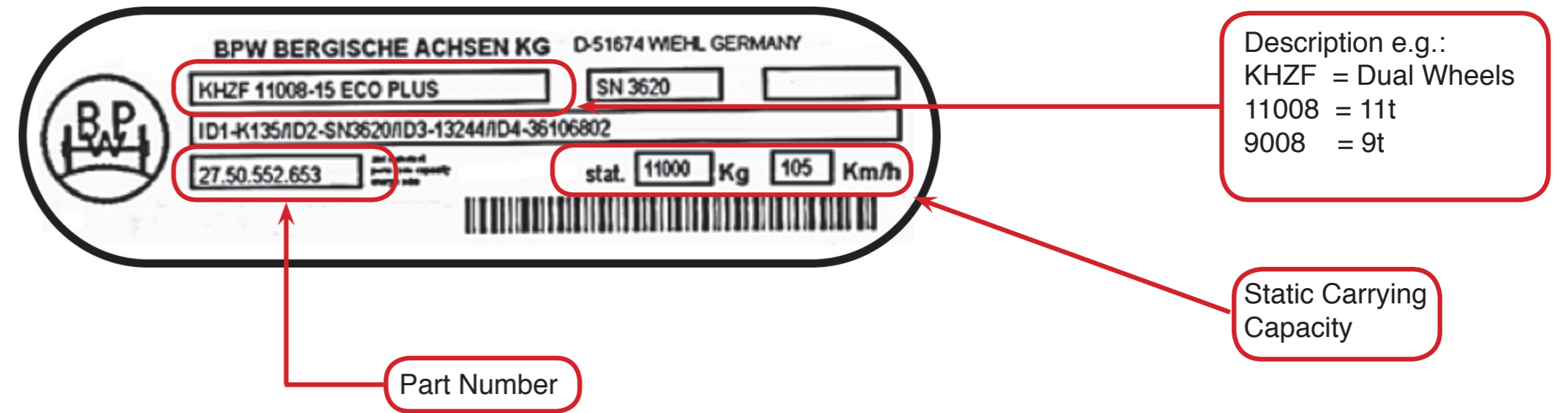
With the different axle generations available in the market, BPW have compiled this guideline to assist in identifying the applicable axles.

There are 3 basic ways for identification, i.e.:

1. Axle Name Plate Identification
2. Hub Identification
3. Axle Stub Identification

1. Axle name plate identification

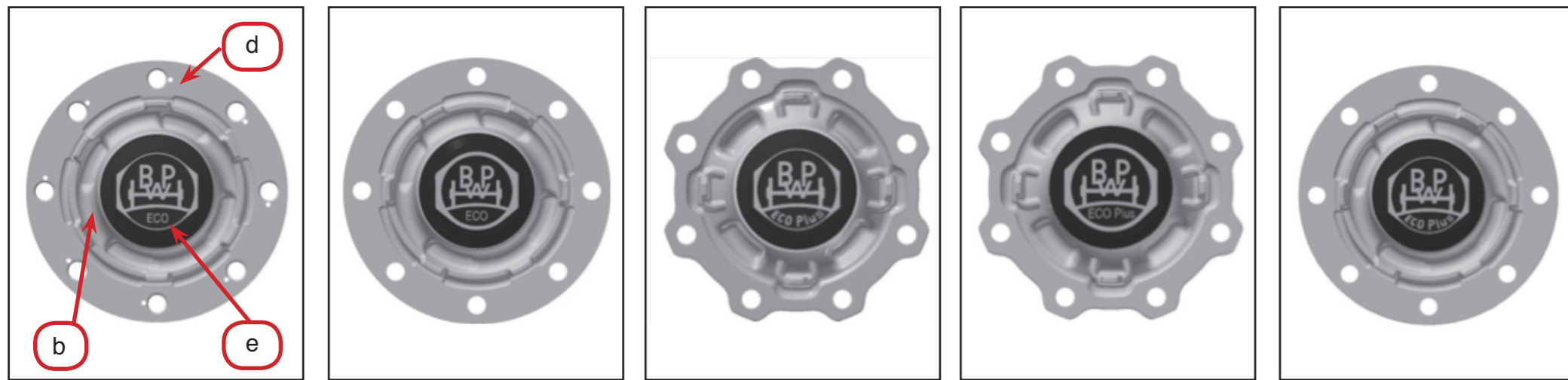
ID	ECO 10t	ECO Maxx 10t	ECO Plus 9t	ECO Plus 2 9t	Eco Plus 10t
Part Number	20.11.70X.93.0	20.11.552.XXX	27.11.552.XXX	27.58.552.XXX	27.50.552.XXX



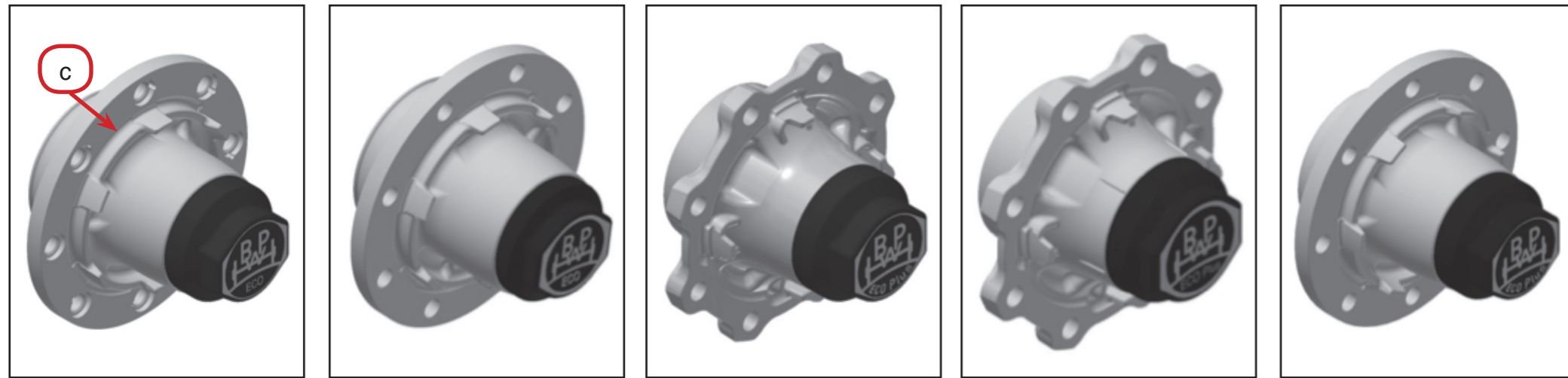
2. Hub Identification

KH ECO 10t KH ECO Maxx 10t KH ECO Plus 9t KH ECO Plus 2 9t KH ECO Plus 10t

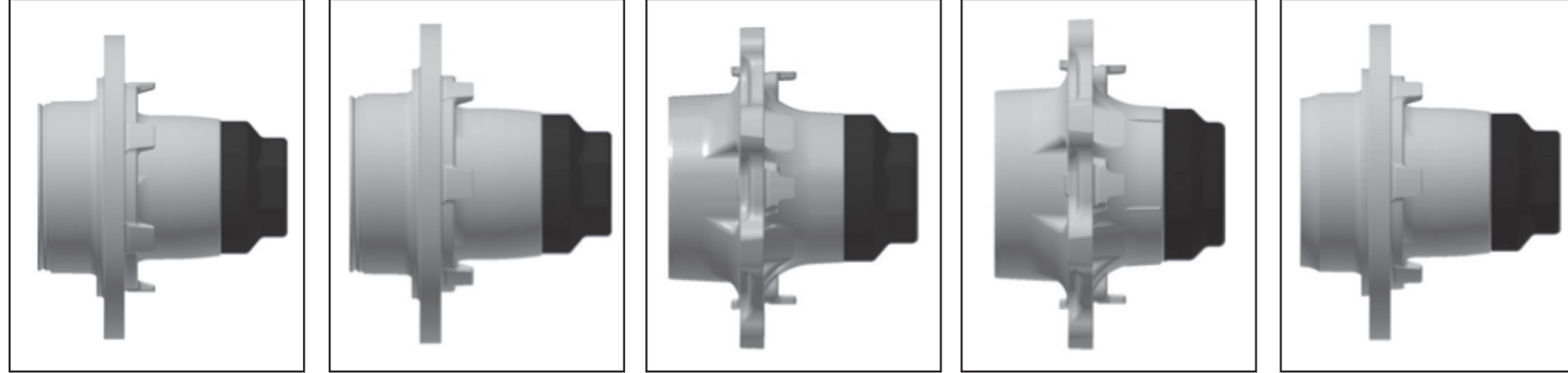
Front View:



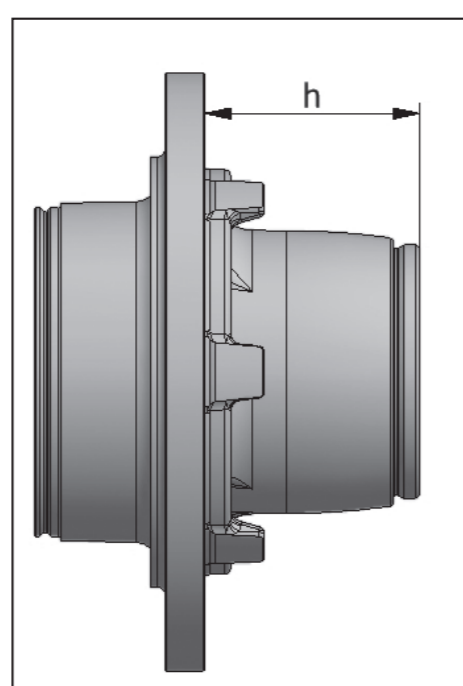
Isometric View:



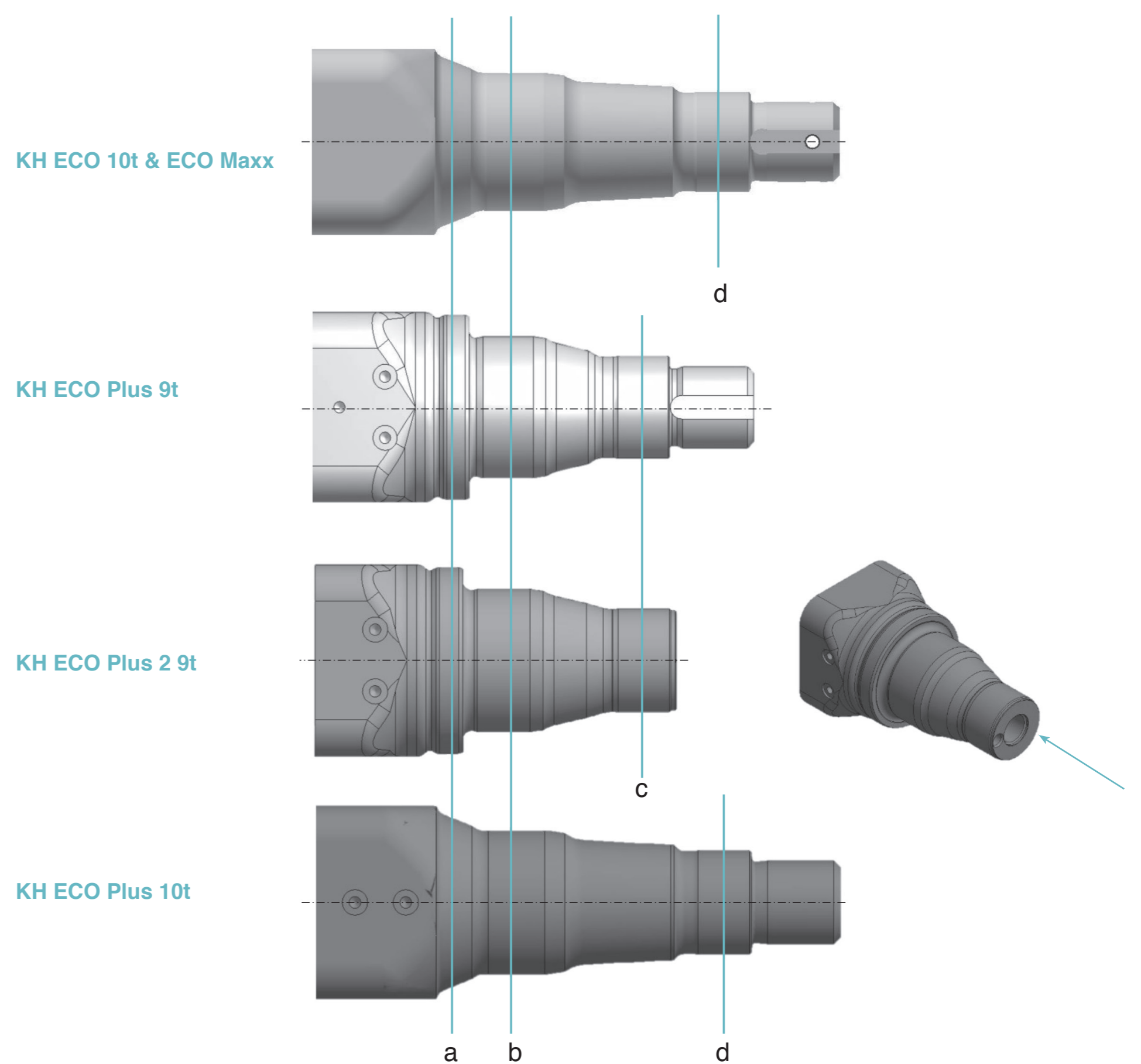
Side View:



ID	KH ECO 10t	KH ECO MAXX 10t	KH ECO Plus 9t	KH ECO Plus 2 9t	KH ECO Plus 10t
a)	Casting Part number: 01.272.47.29.0	Casting Part number: 01.272.47.29.0	Casting Part number: 01.272.46.28.0	Casting Part number: 01.272.46.33.0	Casting Part number: 01.272.46.14.0
b)	Four wide spokes	Four wide spokes	Four wide spokes	Four wide spokes	Four wide spokes
c)	Six wide spigots	Six wide spigots	Four narrow spigots	Four narrow spigots	Six wide spigots
d)	Stud with back nut	Press-in stud	Press-in stud	Press-in stud	Press-in stud
e)	"ECO" written straight on the hub cap	"ECO" written in a straight line on the hub cap	"ECO Plus" written in a curve on the hub cap	"ECO" written in a straight on the hub cap	"ECO Plus" written in a curve on the hub cap
f)	Screw-on hub cap Spanner Width = 110mm	Screw-on hub cap Spanner Width = 110mm	Screw-on hub cap Spanner Width = 110mm	Bayonet fitting-hub cap Spanner Width = 120mm	Screw-on hub cap Spanner Width = 110mm
g)	Height of hub h = 115 mm (see below)	Height of hub h = 115 mm (see below)	Height of hub h = 90 mm (see below)	Height of hub h = 90 mm (see below)	Height of hub h = 115 mm (see below)
h)	ABS Ring – Clip-on	ABS Ring – Clip-on	ABS Ring – Bayonet fitting	ABS Ring – Bayonet fitting	ABS Ring – Clip-on
i)	Hub part number: Dual Wheel Steel or Aluminium Rims – 05.272.46.16.0 (Longer spigot)	Hub part number: Dual Wheel Steel or Aluminium Rims – 05.272.46.19.0 (Longer spigot)	Hub part number: Dual Wheel Steel or Aluminium Rims – 03.272.46.28.2 (Longer spigot)	Hub part number: Dual Wheel Steel or Aluminium Rims – 03.272.46.33.0 (Longer spigot)	Hub part number: Dual Wheel Steel or Aluminium Rims – 03.272.46.31.2 (Longer spigot)
j)	Hub assembly part number: – 09.802.99.91.0	Hub assembly part number: – 09.802.99.85.0	Hub assembly part number: – 09.802.99.86.0	Hub assembly part number: – 09.801.07.36.0	Hub assembly part number: – 09.801.06.61.2



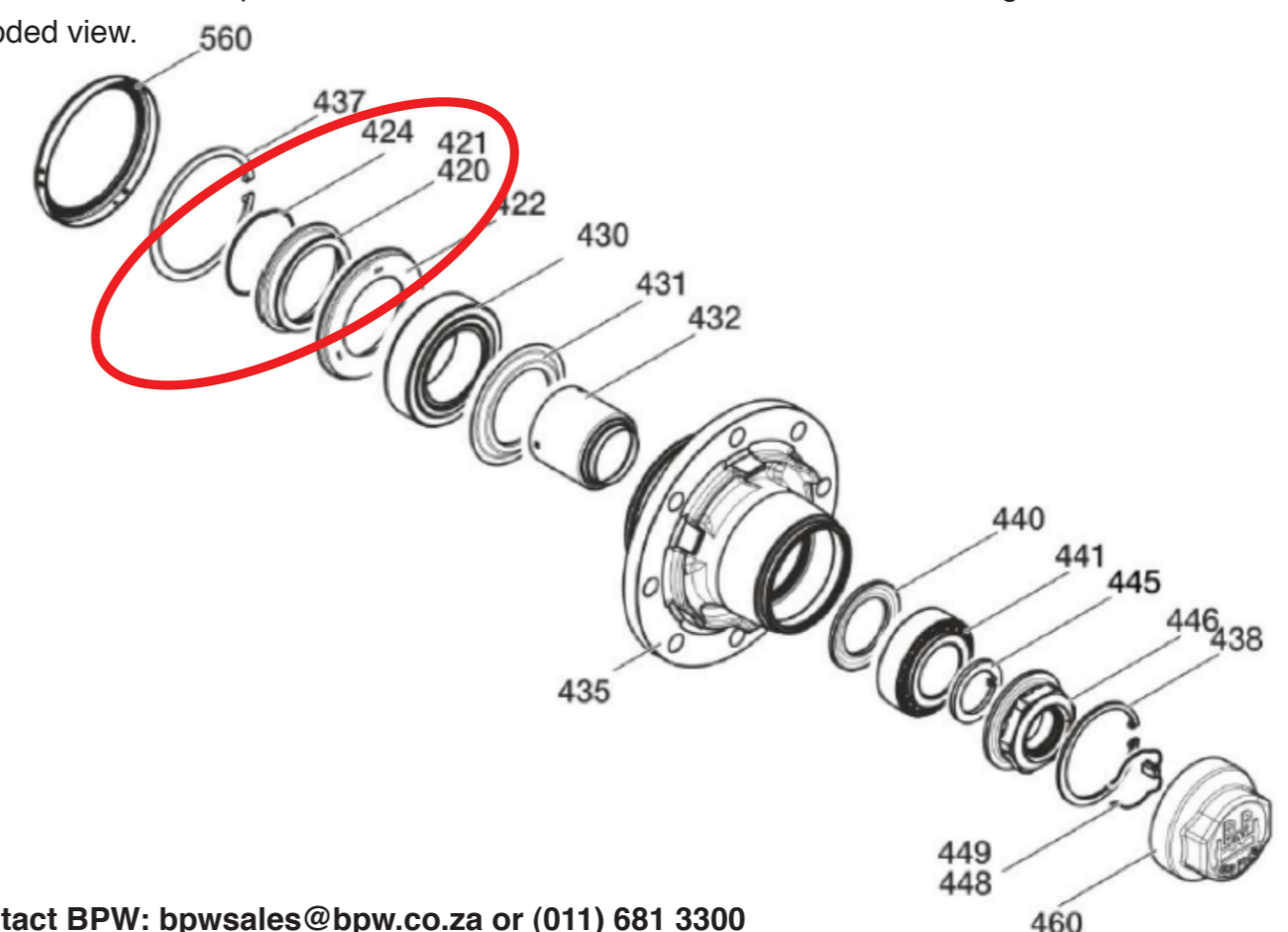
3. Axle Stub Identification:



ID	KH ECO 10t	KH ECO MAXX 10t	KH ECO Plus 9t	KH ECO Plus 2 9t	KH ECO Plus 10t
(1)	Conical thrust collar seat (a)	Conical thrust collar seat (a)	Integrated thrust collar (a)	Integrated thrust collar (a)	Conical thrust collar seat (a)
(2)	Bearing: Inner – 33118 Outer – 33213	Bearing: Inner – 33118 Outer – 33213	Bearing: Inner – 33118 Outer – 33213	Bearing: Inner – 33118 Outer – 33213	Bearing: Inner – 33118 Outer – 33213
(3)	Wide bearing spacing design (b - d)	Wide bearing spacing design (b - d)	Narrow bearing spacing design (b - c)	Narrow bearing spacing design (b - c)	Wide bearing spacing design (b - d)
(4)	Axle NUT thread - External - M52 x 2 - 4 Holes for locking pin	Axle NUT thread - External - M52 x 2 - 4 Holes for locking pin	Axle NUT thread - External - M52 x 2	Axle BOLT thread: - Internal - M32 x 2	Axle NUT thread - External - M52 x 2
(5)	ABS bracket mounting holes in-line with the centreline	ABS bracket mounting holes in-line with the centreline	ABS bracket mounting holes square to the centreline	ABS bracket mounting holes square to the centreline	ABS bracket mounting holes in-line with the centreline
(6)	Thrust washer (05.370.07.65.0) with O-ring and Oil seal (02.5664.58.00)	Thrust washer (05.370.07.65.0) with O-ring and Oil seal (02.5664.58.00)	Integrated Thrust washer. ECO Plus seal (02.5664.74.00)	Integrated Thrust washer. ECO Plus seal (02.5664.74.00)	Thrust washer (05.370.07.73.0) with O-ring. ECO Plus seal (02.5664.74.00)

Please note:

A) When replacing hubs on any ECO Plus 10t axle, please ensure that the conical thrust washer and O-ring, items 420 & 424, are properly inserted. See exploded view.



For more information please contact BPW: bpwsales@bpw.co.za or (011) 681 3300